

Shady Trails campers and staff 1940's

Primarily from the Bentley Library in
Ann Arbor, MI duplicated here with
permission

Important Notice

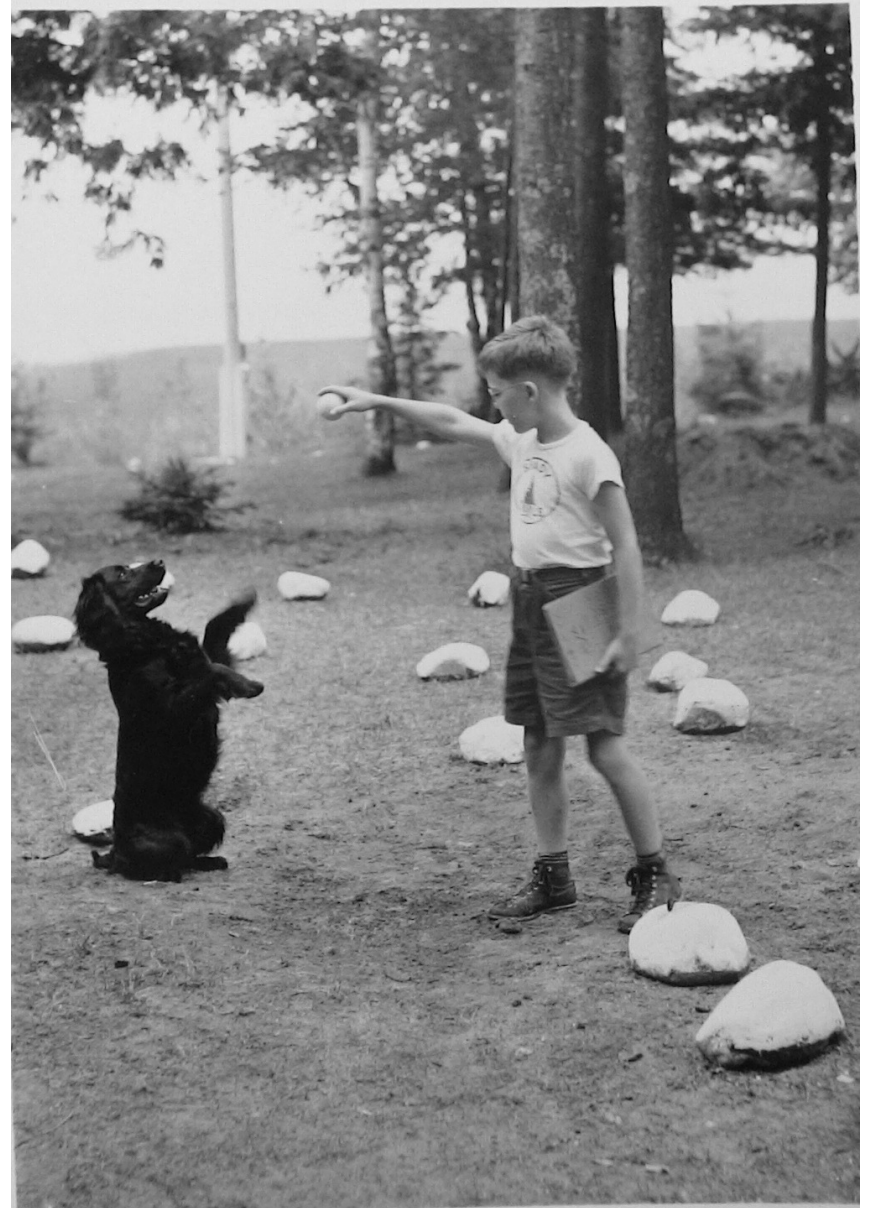
Most of the pictures in this PowerPoint are from two boxes of materials housed in the Bentley Library in Ann Arbor, Michigan. I was given permission to create a PowerPoint presentation to show at the Shady Trails 2014 reunion, but the PPT or individual pictures that came from the library were not to be reproduced elsewhere without getting permission in writing for each picture from the Bentley Library. The campers at the reunion signed a petition requesting that all the pictures could be placed online, and gratefully, **12 separate PPTs of pictures from the 1930's-1990's were added to the Shady Trails website**

(www.mnsu.edu/comdis/kuster/shadytrails.html)

with permission in writing from the Bentley Library. This PPT is copyrighted and may be viewed on the website, but pictures or the entire PPT may not be downloaded or reproduced in any way without permission of the Bentley Library. (Judy Kuster)

Tom and Judy Kuster worked in the Bentley Library in Ann Arbor, Michigan, carefully photographing materials in two boxes. Some photographs in this PPT were also supplied by former campers.





The 1940's

Campers and Staff



1
9
4
0
c
a
m
p
e
r
s
/
s
t
a
f
f



1
9
4
2
c
a
m
p
e
r
s
/
s
t
a
f
f

Back of 1943 picture with several autographs – from former camper, Kenneth Harold Smyth

Merry

Gavin "Beverly" Chohaney
 James "Handsome" Robinson
 John Michael Glogher
 Sinclair Sullman Miller
 Bill Mc Donnell Lewis
 Francis Walnut
 Betty Shepherd
 Chuck Berman
 Bill Mc Donnell

Dave Williams
 Jack Olsaver
 Pete Casser
 Chuck Wortley
 Dick Clark
 Tom Bassett

Ronald
 Bob Richman Don Grande
 +
 Tom Keibald
 Tom Whitney
 Dick McBurnett
 Dale Vincent

Mrs. E. W. Bilton
 via Jewell
 J. E. Morley

J. W. Bilton
 Shedd Gross

Orpha L. Dale
 Marie Clancy '43

1943 article about the camp and campers

SAVE TIRES, SAVE GASOLINE, SAVE TIME AND SAVE MONEY
DEALER OR FIRESTONE STORE FOR THINGS YOU NEED

Listen to the Voice of Firestone with Its Orchestra, under direction of Alfred W.

built its FIRST synthetic rubber passenger car tires at the New York World's Fair and began the manufacture of its own synthetic rubber, called Butaprene, the same

Shady Trails Recognized as National Speech Improvement Camp

Northport with all of its Scenic Beauty had led to a Summer Camp to be organized over ten years ago just south of the village about a mile and a half known as Shady Trails. It is now known Nationally and even Internationally not as a summer recreational camp, but as a constructive camp to aid young men for to-morrow in the improvement of their speech. So with Northport's local beauty, cherry industries and now Shady Trails—The National Speech Improvement Camp, the name of Northport goes farther to help make this a better world to live in for the future.

CAMP HISTORY

Shady Trails, the National Speech Improvement Camp, was established in 1932. Since the beginning it has been under the directorship of John N. Clancy. It is devoted solely to the correction of speech disorders in boys.

The 1932 enrollment numbered only four boys. There were also four members on the staff that year. The 1943 enrollment of forty-seven boys, with its staff of sixteen members, fills the present location to its utmost capacity. All campers are in attendance for the camp's eight-week session.

Though operated as a camp, Shady Trails is really a special school. The day at Shady Trails is much unlike that of a day in a recreational camp. Campers are in class until 10:30 each morning and until 4:15 each afternoon. Out-of-town activities are planned for their value in speech training.

The location of the camp far out on the Leelanau Peninsula was especially chosen for its steady coolness which is conducive to summer class work and because of its inaccessibility to visiting parents. In establishing new habits it is the desire of the camp to completely withdraw a boy from his customary environment.

Shady Trails Camp is sponsored and supervised by the University of Michigan. It is visited periodically throughout the summer session by faculty members of the Department of Speech and of the Speech Clinic of the University.

Because of the size and calibre of the staff and the inclusiveness of board and room the cost of maintaining a boy at Shady Trails is substantial. The all inclusive fee of \$360.00 per boy has been the same since the camp was started.

1943 Staff

DIRECTOR

John N. Clancy, University of Michigan.

CAMP MOTHER

Mrs. J. N. Clancy.

SPEECH CORRECTIONISTS

Mabel-Louise Arey, Indiana State Teachers College.

Hildred Gross, Detroit Public Schools.

Orpha Nale, Charleston (West Virginia) Public Schools.

Dick Morley, Pennsylvania State Teachers College.

Neil Smith, Freeport (Illinois) Public Schools.

Isabel Barker, Pennsylvania State Teachers College.

Maralyn MacRitchie, University of Michigan.

Betty Shepherd, Ball State Teachers College.

PHYSICAL DIRECTORS AND COUNSELORS

William Bילו, Wayne University.

Kenneth Gregg, Alpena (Michigan) Public Schools.

Victor Jewell, Tolono (Illinois) Public Schools.

Kenneth Letsinger, Allegan (Michigan) Public Schools.

Keith Maxwell, Elwood (Indiana) Public Schools.

CAMP SECRETARY

Marie Clancy.

1943 Enrollment

MICHIGAN

Thomas Bassett	Saginaw
Robert Bichan	Detroit
Richard Clark	Traverse City
Richard Corpe	Deckerville
James Robinson	St. Louis
Edward Elkus	Detroit
Bud Hall	Gladwin
Jack Hawley	Ontonagon
Thomas McDonald	Saginaw
Tom McKinney	Kalamazoo
Max Mueller	Port Huron
Stillman Muller	Coopersville
John Olsaver	Plymouth
Robert Pardon	Ann Arbor
Robert Payette	East Grand Rapids
Richard Placeway	Inlay City
Dale Pringle	Snover.
Melvin Schultz	Flint
J. J. Shannon	Detroit
Thomas Thiede	Birmingham
Robert Van Hoesen	Ferndale
Peter Welty	Birmingham
Thomas Whitney	Saginaw
Charles Wortley	Highland Park
Bucky Taylor	Kalamazoo
Jack Sinclair	Blissfield

ILLINOIS

Quigg Porter	Evanston
Kenneth Stern	Winnebago

PENNSYLVANIA

David Andrews	Mahoningtown
Francis Walnut	Philadelphia
David Williams	Lancaster

NEW YORK

Charles Berman	Mount Vernon
Philip Choquette	Hamilton
Pete Passer	Niagara Falls

INDIANA

Dale Vincent	Indianapolis
Michael Taggart	Indianapolis

OHIO

Thomas Leibold	Cincinnati
Lewis Reinwald	Springfield
Gabriel Chohaney	Lorain

NEW JERSEY

James Dianich	Colonia
Merrill Hess	Summit

WEST VIRGINIA

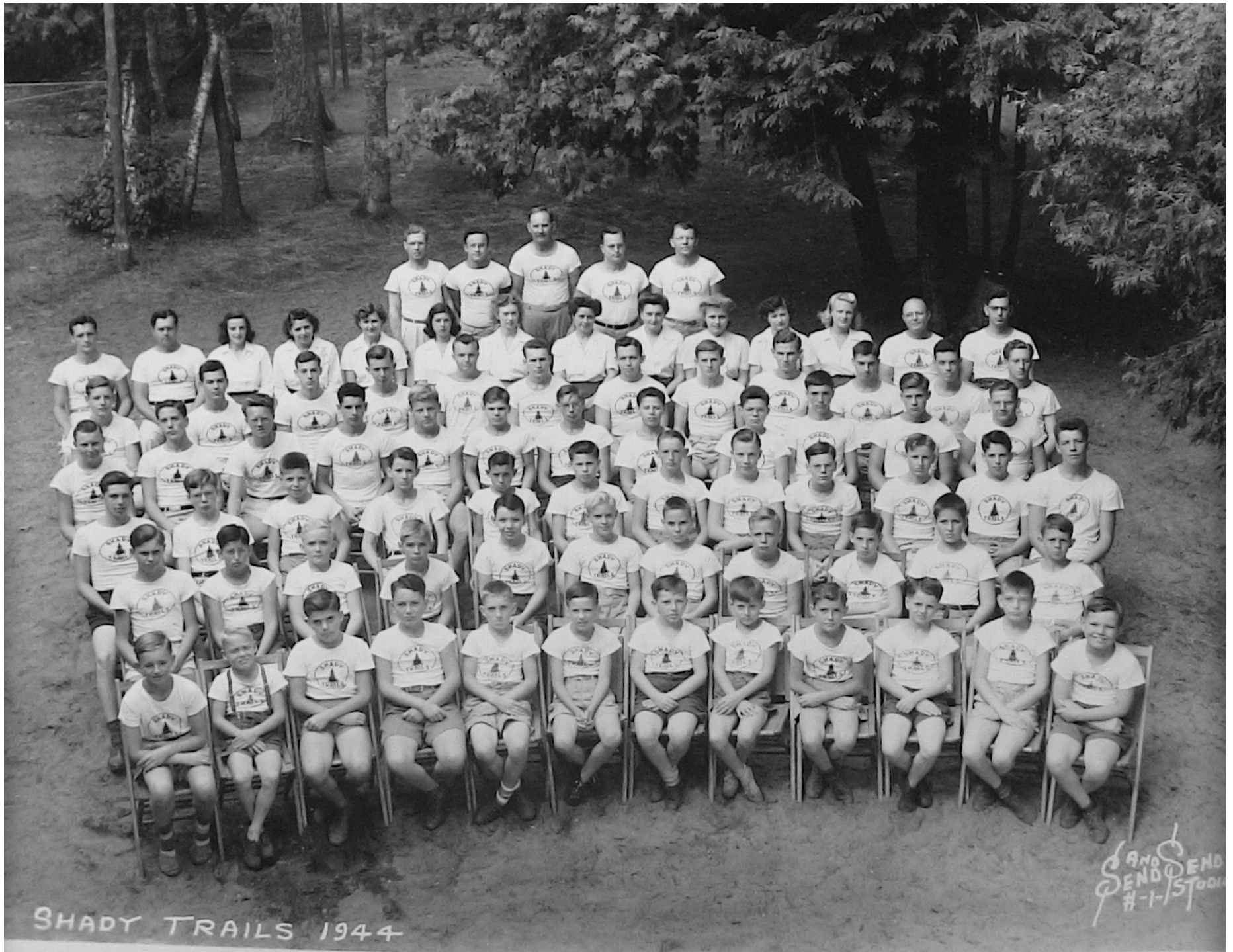
John Gallagher	Charleston
Richard McDermott	Cameron
Charles Peak	Gilbert

NORTH DAKOTA

Donald Grand	Jamestown
William McDonell	Minot

kenneth Smyth

Ontario



1
9
4
4
c
a
m
p
e
r
s
/
s
t
a
f
f

SHADY TRAILS 1944

SEND #1-1ST



1
9
4
5
c
a
m
p
e
r
s
/
s
t
a
f
f

#4



JOHN CARTER
 RONALD COLE
 PAUL ELLIS
 SANDY GORDON
 BUD HALL
 TED HOGLAND
 JOHN HODGE
 JACK FELL
 BRUCE BURGSETH
 DAVE SMITH
 CHARLES SKALA
 JACK WATSON

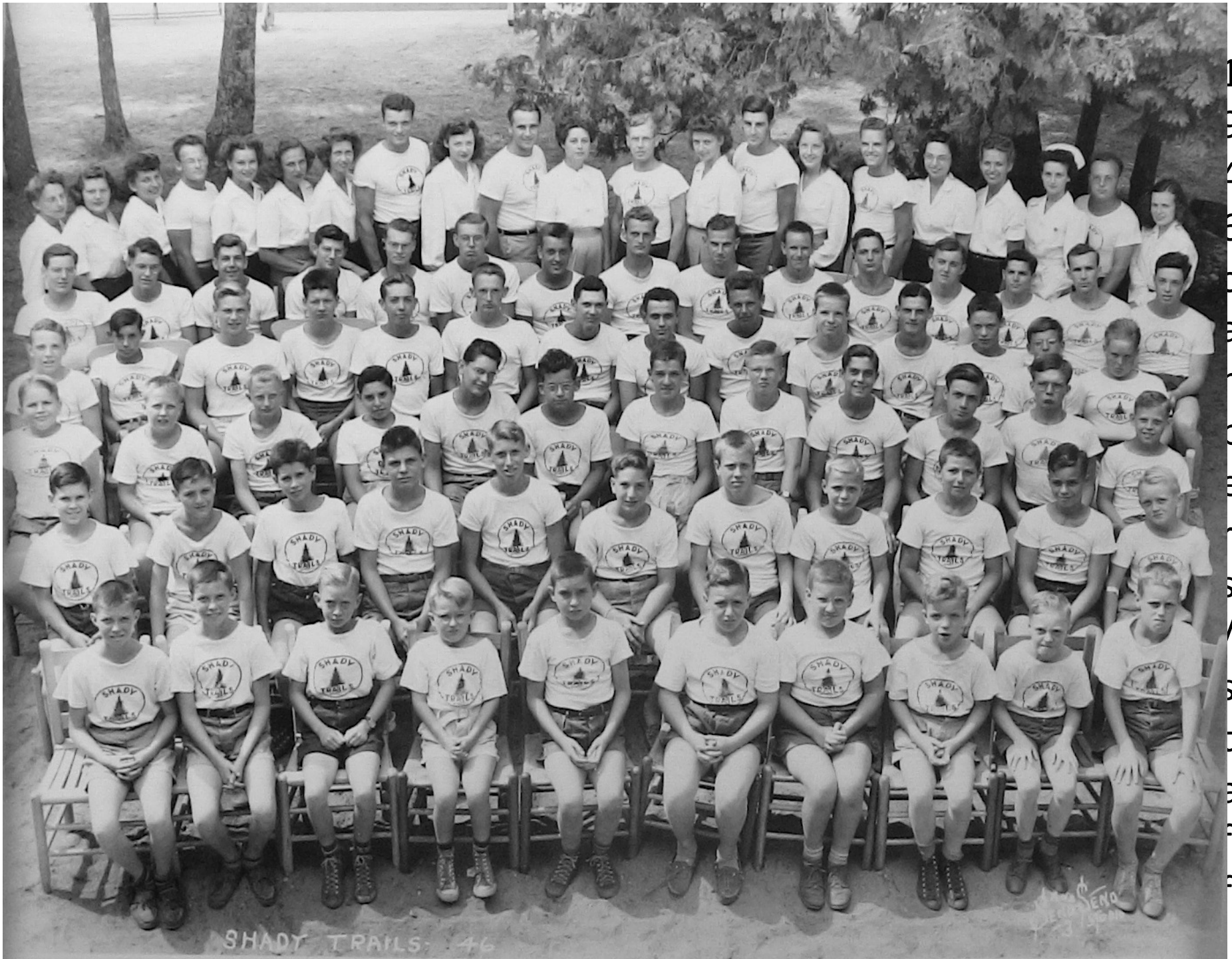
LOUIS BURNS
 GUY DUFFIELD
 BOB KLEIN
 FRED KRIMENDAH
 TOM MCKINNEY
 DON M'LEAN
 BILL PARTALIS
 JIM SHANNON
 BILL SHANNON
 TOM SHAPLEY
 ALAN SMALL
 DON WEBB
 CHUCK WORTLEY

JOE ANDERSON
 TOM HEISKELL
 JOHN INGWERSEN
 BILL M'DONNELL
 RICHARD MOORE
 CHARLES PEAK
 HO SEYTON
 BILL SPURGEON
 BOB TRIBBLE
 TED SMITH
 JOHN WATKINS
 DAVE WILLIAMS

BOB CAMPBELL
 AL ALBER
 AL CLIMIE
 BRUCE KING
 CHUCK PARSONS
 OLAV SMISTAD
 PETE STADLMAN
 BILL SPEAR
 JIM ROBBINS
 BOB TIMMONS
 DALE VINCENT
 DICK WHITING
 TOM WORTLEY

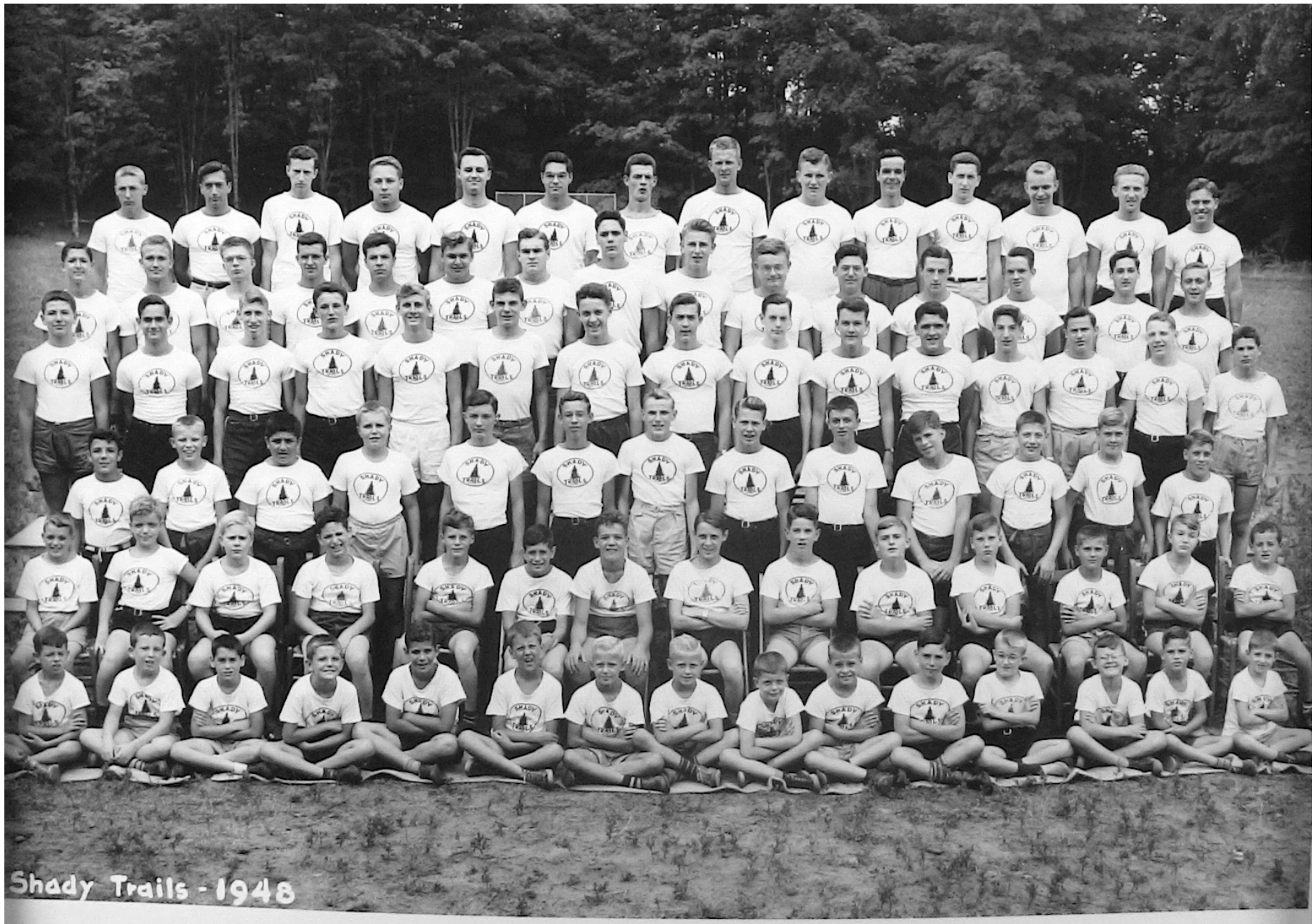
GEORGE GREENBAUM
 DAVE GROW
 CLYDE HAMILTON
 FRANK HARNEW
 DON KIEPERT
 RONNIE KOSKI
 BARRY LUCK
 TOMMY LUCK
 BOB PARDON
 JAN VAN LEEUWEN
 RAY WALL
 MIKE WELDON

SHADY TRAILS CAMP... 1945



SHADY TRAILS 46

1
9
4
6
C
A
M
P
E
R
S
Y
S
T
E
M



Shady Trails - 1948

1
9
4
8
c
a
m
p
e
r
s

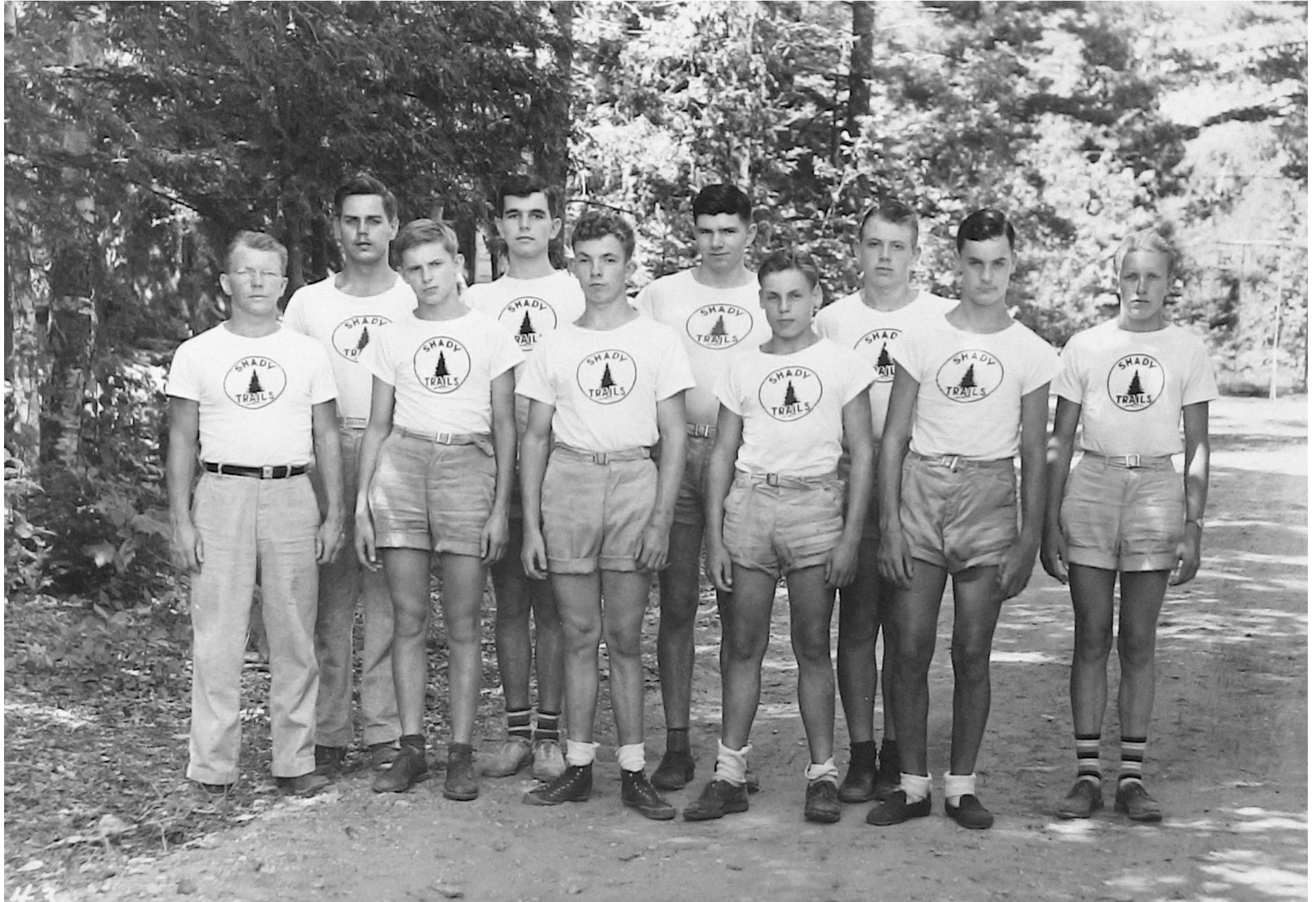
1948-1950 campers/staff (undated)



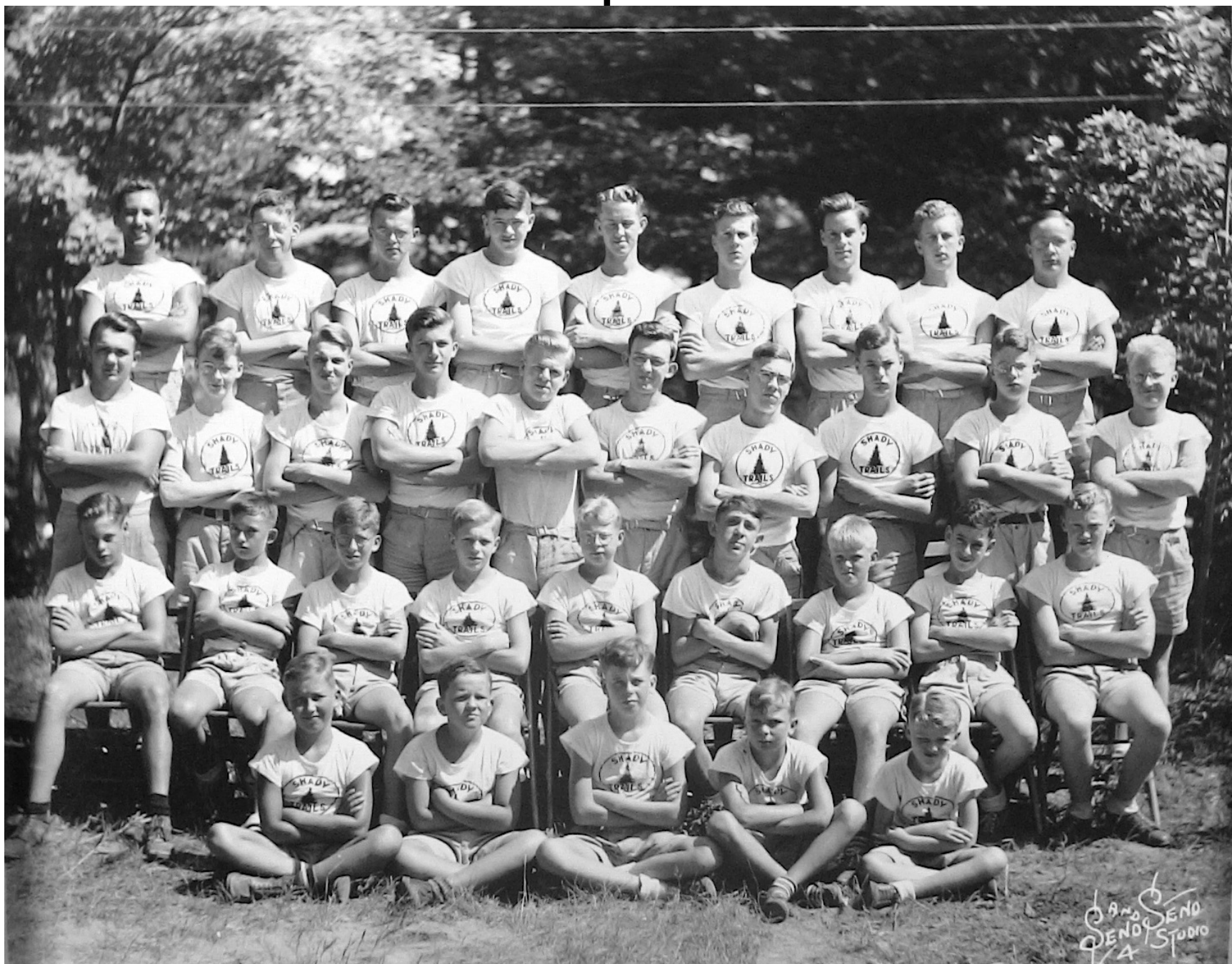
1940's Campers/staff undated



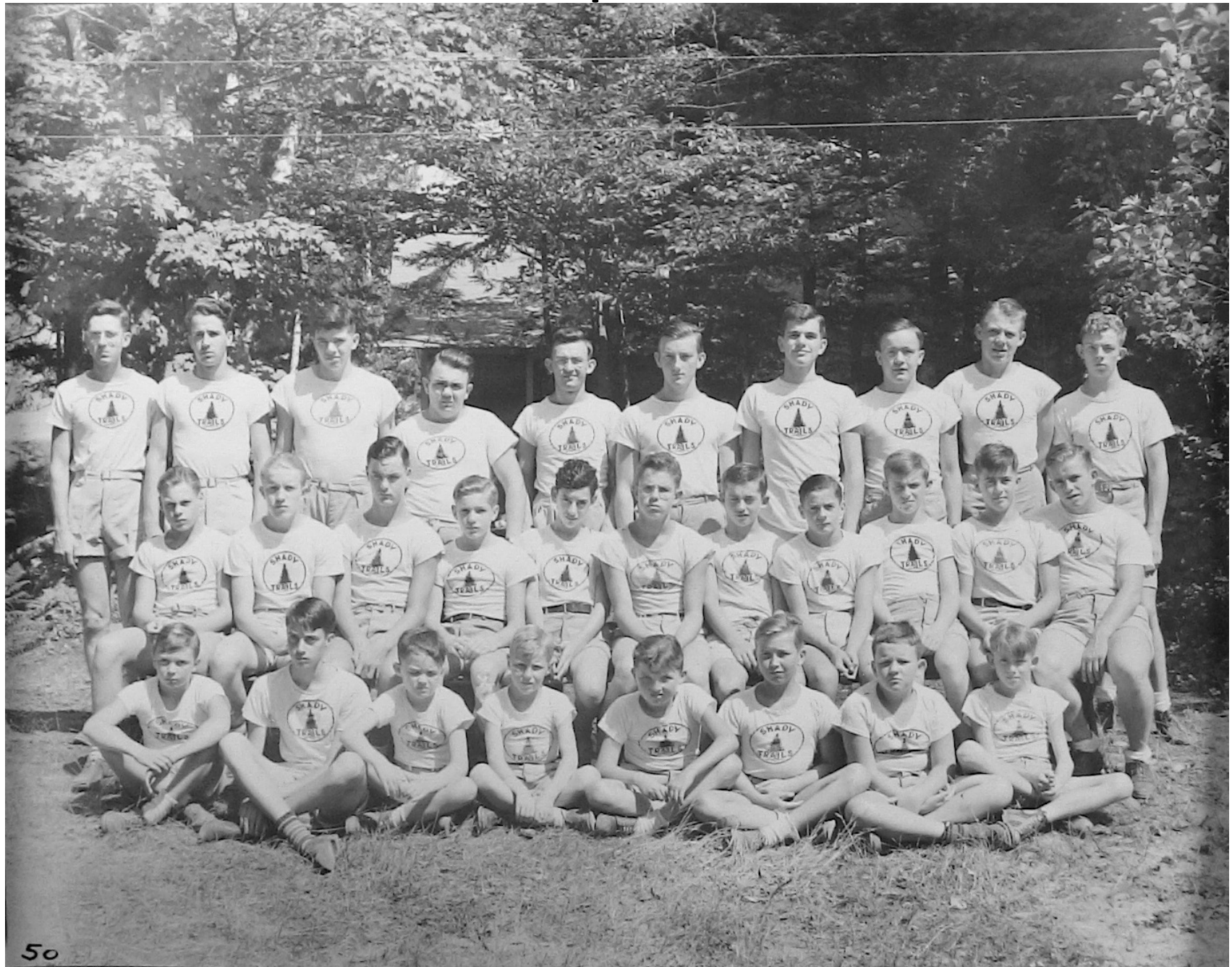
1940's Campers undated

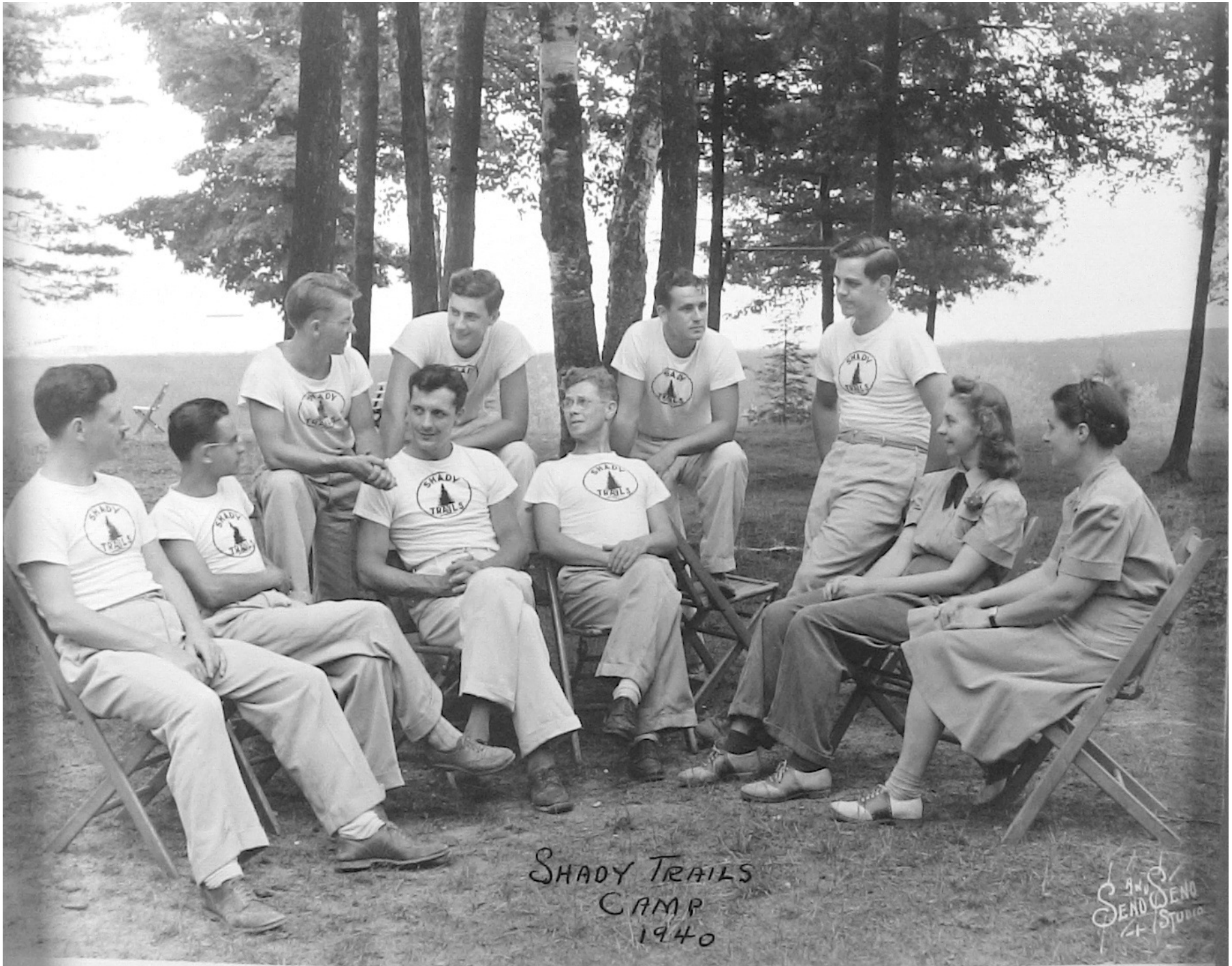


1940's Campers undated



1940's Campers undated



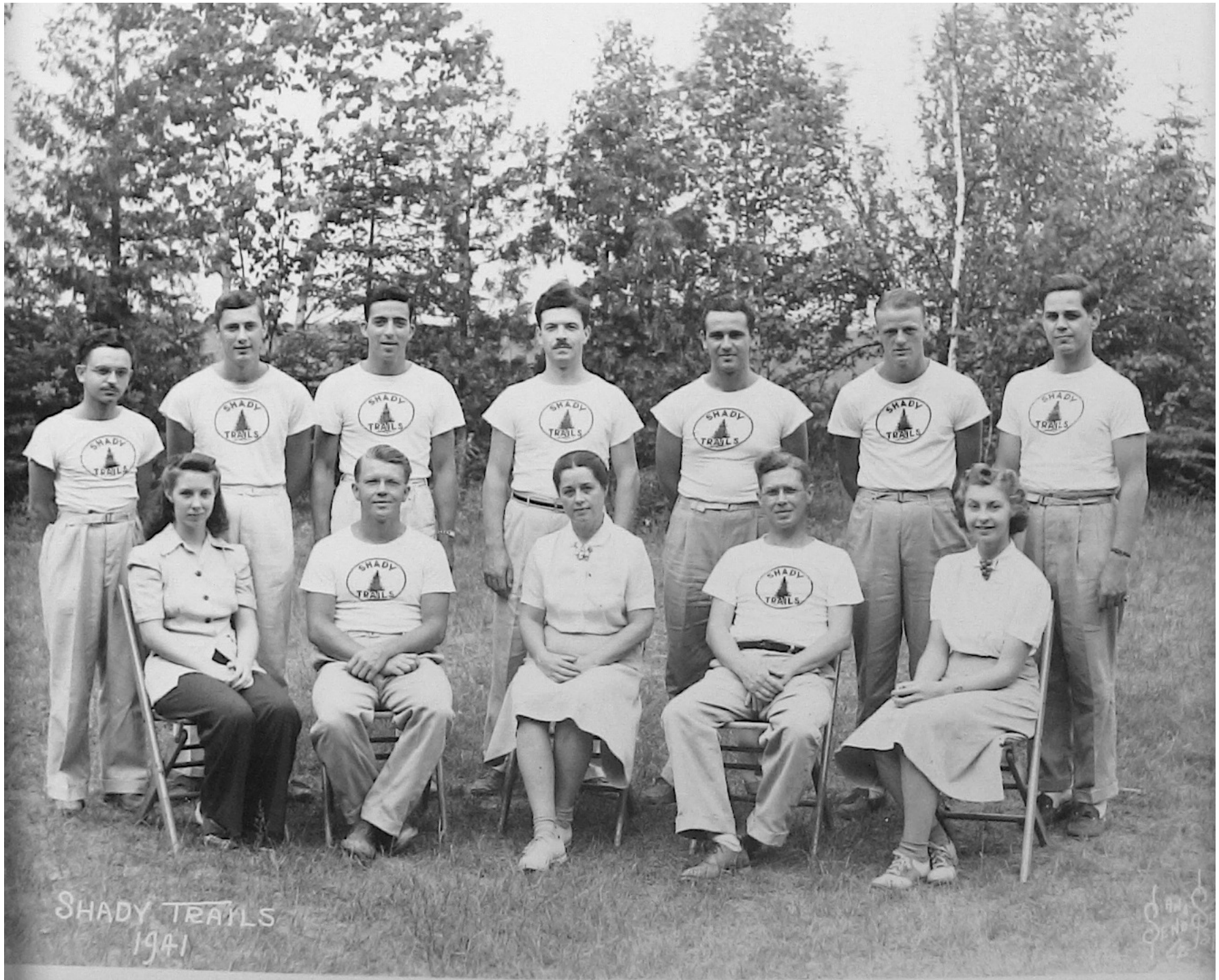


SHADY TRAILS
CAMP
1940

SEND SEND
STUDIO

1
9
4
0

S
t
a
f
f



1
9
4
1
S
t
a
f
f



1942

SHADY TRAILS
SEND 15 1942

1
9
4
2
S
t
a
f
f



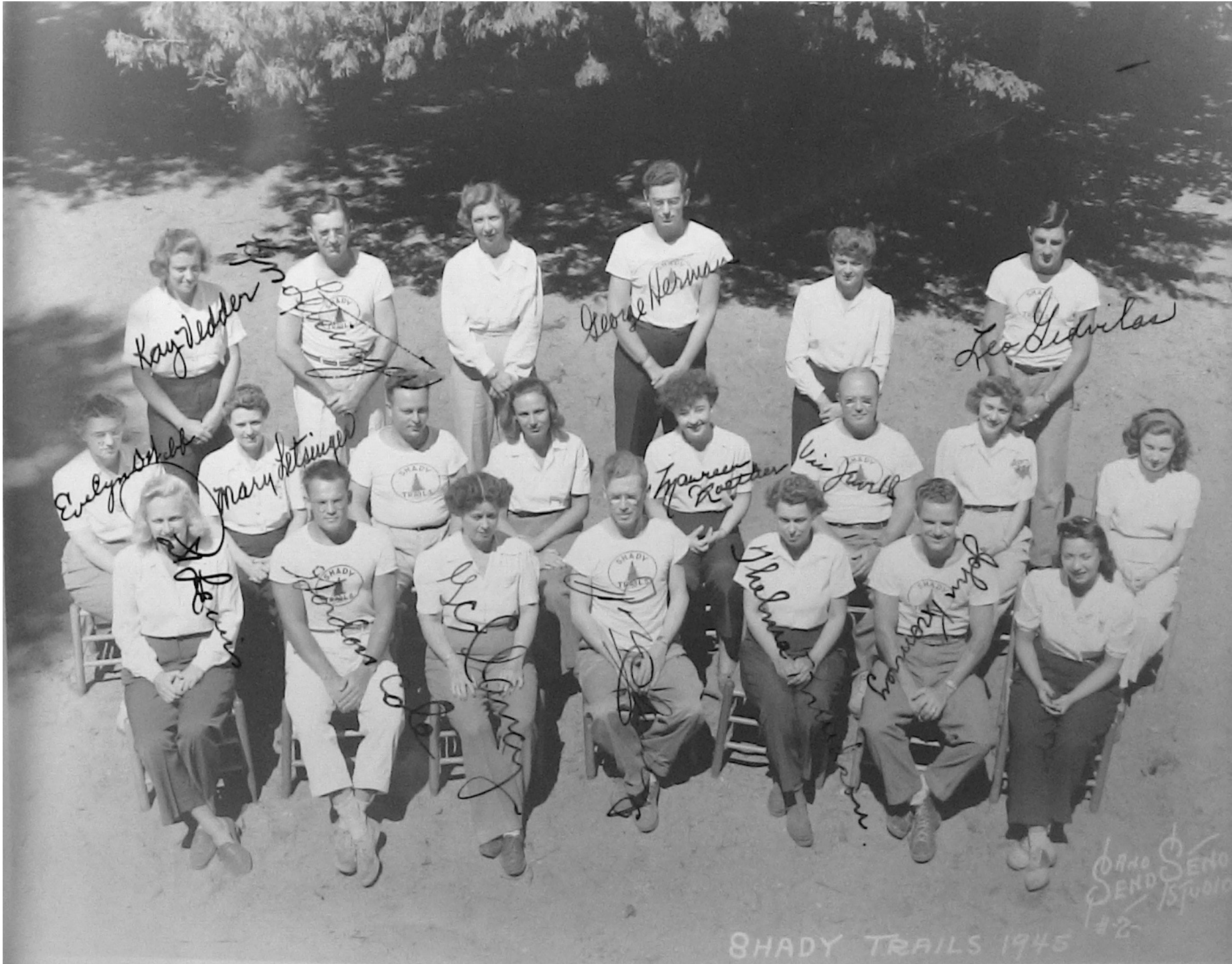
1
9
4
3

S
t
a
f
f



1
9
4
4
S
t
a
f
f

6 The SEND 15



1
9
4
5

S
t
a
f
f

SHADY TRAILS 1945

SHADY TRAILS STUDIO #2



1
9
4
6
?
S
t
a
f
f



1
9
4
8

S
t
a
f
f

Shady Trails - 1948



1
9
4
8

S
t
a
f
f





SHADY TRAILS - U. OF M. - 1949

1
9
4
9

S
t
a
f
f

1940's Staff - undated



1940's Staff - undated

